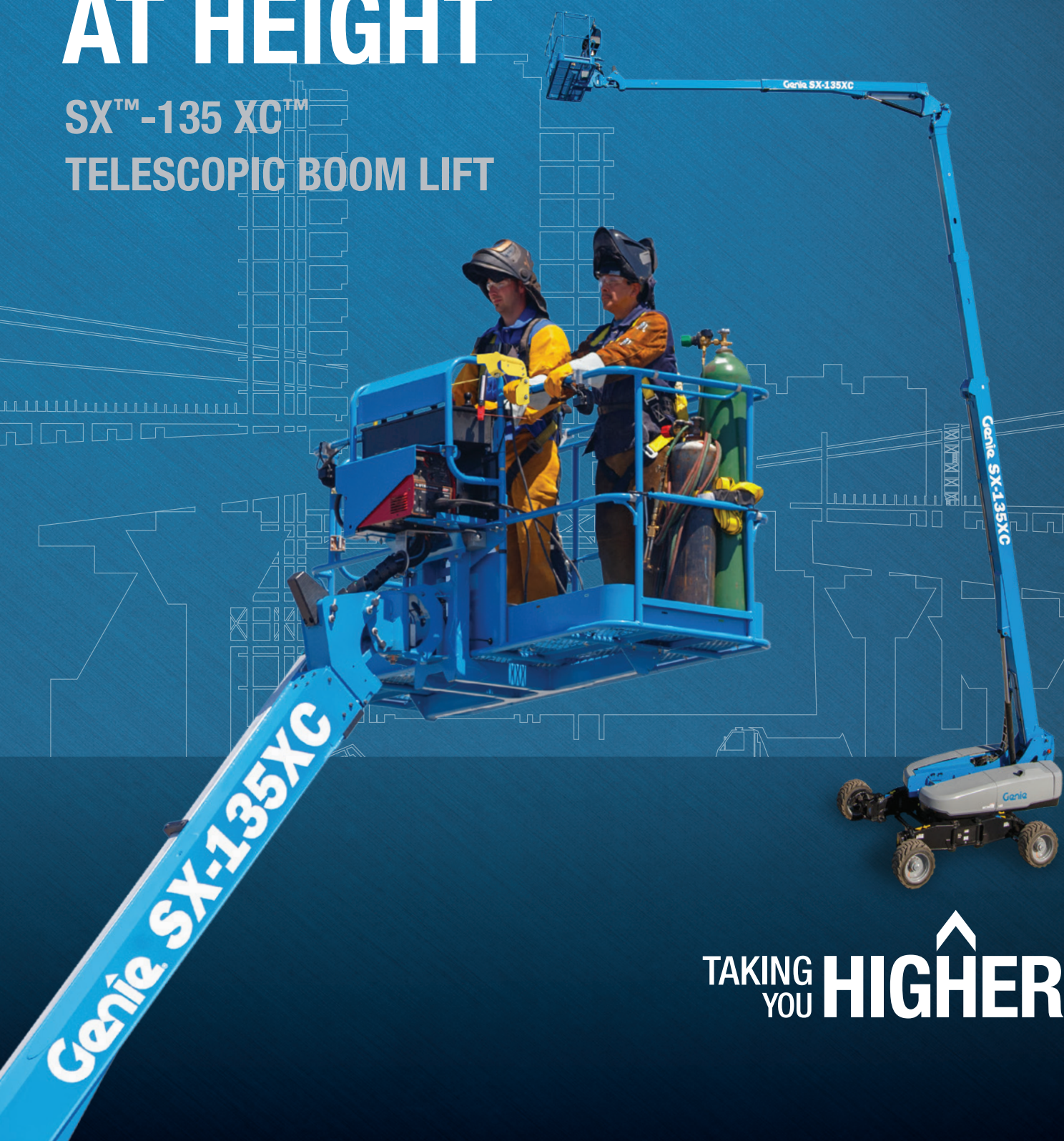


**Genie**<sup>®</sup>  
A TEREX BRAND

# EXTRA HANDS AT HEIGHT

**SX<sup>™</sup>-135 XC<sup>™</sup>**  
**TELESCOPIC BOOM LIFT**



TAKING  
YOU **HIGHER**<sup>™</sup>





# DO MORE, OFFER MORE

## Increased Capacity and Potential

Responding to today's widespread demand for new solutions offering the ability to work at height safely with increasingly heavy loads, the Genie® SX™-135 XC™ telescopic self-propelled boom lift marks the most significant breakthrough in stick booms that the aerial industry has seen in well over a decade.

Why? Delivering industry-leading outreach and capacity through the full working envelope, thanks to its Genie Xtra Capacity™ (XC) technology, the Genie SX-135 XC boom lift offers a third more lift capacity than typical self-propelled 43 m (141 ft) booms. Combining 3 m (10 ft) more outreach than any other model on the market, with the benefits of its 9.14 m (30 ft) Telescoping Jib-Extend™ and compact footprint, the Genie SX-135 XC boom provides operators the ability to work more productively in applications that require higher capacities. For fleet owners, this implies the opportunity to offer more with a single machine for high rates of utilization and excellent rROIC.



**XC** | **XTRA**  
**CAPACITY**



## Exceptional Lift Ability

Engineered to work at height safely to perform a multitude of heavier tasks, the Genie SX™-135 XC™ boom lift features an unrestricted capacity of 300 kg (660 lb) and a restricted capacity of 454 kg (1,000 lb) across the full working envelope. Its standard 2.44 m (8-ft) tri-entry platform with side-swing gate offers ample room for up to three people, while still leaving room for tools and materials.

## Unique Range of Motion

Providing 3 m (10 ft) more outreach and 32% more lift capacity across the full working envelope than similar units in its category, the Genie SX-135 XC boom lift combines 27.43 m (90 ft) of outreach, with a 5.48 m (18 ft) to 9.14 m (30 ft) hydraulic Telescoping Jib-Extend™ to provide operators incredible up-an-over accessibility. Featuring 125 degrees of vertical jib articulation (55 degrees down to 70 degrees up), this exceptional new generation of telescopic boom lift also provides the ability to work 6 m (19 ft 8 in) below grade. When the job is done, the jib is designed to be stowed under the primary boom for ease of transport.



## Key Applications

- ▶ Refineries
- ▶ Stadiums
- ▶ Shipyards
- ▶ Telecommunications
- ▶ Wind turbine maintenance
- ▶ Harbour crane maintenance
- ▶ Large utilities
- ▶ Industrial and general construction
- ▶ Commercial facilities
- ▶ Conference centres
- ▶ Historical monuments
- ▶ Glass panelling
- ▶ Bridge inspections
- ▶ Silos



# PRODUCTIVE, FASTER... AND EASIER



## New Mini XChassis™

A third smaller than the full-size version, a Mini XChassis provides excellent stability, a compact footprint and a narrow profile for transport.

Measuring just 2.49 m (8 ft 2 in) x 4.11 m (13 ft 6 in) retracted or 3.94 m (12 ft 11 in) x 4.11 m (13 ft 6 in) with axles extended, the reduced dimensions of this model's chassis design offers excellent manoeuvrability on and around confined jobsites without disrupting people or traffic.

## New Generation Load Sense Cell

Offering operators the ability to work safely and efficiently up to the limits of the machine's load capacity, a new real-time, low-maintenance load sense cell continuously weighs the load in the platform and disables function if the load exceeds the platform load limit.







### New Zero-Load Field Calibration

Enhancing operator safety and reducing set-up time, thanks to a new simplified machine calibration process, field calibration no longer requires burdensome test weights. Providing more time to get work done, full factory calibration can be performed during annual inspections.

### New Tilt sensor


A tilt sensor gives users access to different ranges of motion based on the machine's rated slope limit. Even on extreme angles, this system maximizes the ability to access even the most hard-to-reach work areas.

### Up-Dated Control System

An updated CAN-based control system brings the familiar SmartLink™ control system features to the SX™-135 XC™ boom. Machine set-up, calibration, diagnostics, troubleshooting, settings and parameters can be modified directly on the machine without the need for any additional tools. Software updates can be performed directly from the control panel via USB, without the need for a laptop computer. Service technicians will also appreciate the new LCD display at the ground controls that makes onboard diagnostics easier.







# SMOOTH, SIMPLE... AND CONVENIENT

## Intuitive Proportional Controls

Providing smooth, high-precision movements, the SX™-135 XC™ boom lift features the fully proportional toggle switch jib and boom controls that have made many other Genie models so popular. Its ground controls also comprise the same familiar tactile membrane switches and user-friendly function diagram layout.



### Safety first

## Genie Protective Solutions

### Lift Guard™ Operator Fall Arrest Bar:

Available for either 1.83 m (6 ft) or 2.44 m (8 ft) platforms, this system allows users to comfortably work outside the platform while still being connected to the platform with a 1.88 m (6 ft) shock-absorbing lanyard.

### Lift Guard Contact Alarm:

Now standard, this system is designed to alert ground personnel in the event of contact with an overhead obstacle. It interrupts boom movement and signals the alert when the operator makes contact with the breakaway cable.

### Lift Guard Operator Protective Structure:

This tubular steel structure is designed to transfer the kinetic energy into surrounding structures while maintaining a protected area for the operator in some circumstances. Allowing excellent visibility and quickly attachable to both 1.83 m (6 ft) and 2.44 m (8 ft) platforms, it weighs 16 kg (36 lb) and is bolted directly on the boom lift's platform — no modifications are needed. All the above systems can be used together.

### Simplified

## Maintenance & Parts Replacement

Like all Genie products, the new Genie SX™-135 XC™ boom lift shares commonality in design, parts and accessories. As well as serviceability benefits and easy access to crucial service points, commonality of parts helps reduce storage space.

### Simple to

## Transport

Weighing 21,727 kg (47,900 lb), with an overall transport length of 3.3 m (43 ft 7 in), a tail swing of 1.14 m (3 ft 9 in) and a ground clearance of 0.38 m (15 in), the Genie SX-135 XC boom lift is transportable on a standard trailer; no over width or over height permits are required.



### Fully

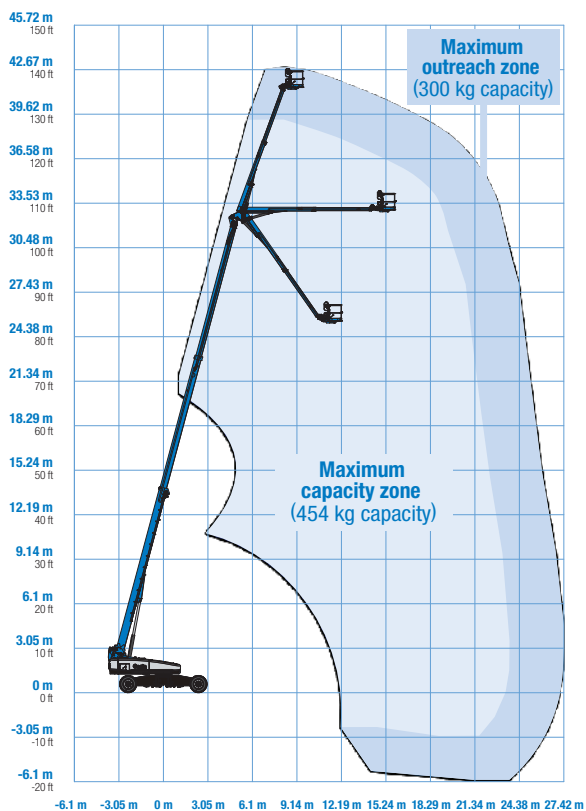
## Drive-Enabled

Offering the ability to travel around the jobsite without retracting and redeploying the boom, the SX-135 XC is drive-enabled at full height. As a result, operators spend more time working and less time making adjustments. Saving even more time, the boom deploys safely and quickly to lift operators to full 43 m (141 ft) platform height in two and a half minutes.





# SPECIFICATIONS



Max. Working height*	43.15 m (141 ft)
Max. Outreach	27.43 m (90 ft)
Below ground reach	6.00 m (19 ft 8 in)
Lift capacity	300/454 kg (660/1000 lbs)
Height / length stowed	3.05 m (10 ft) / 19.76 m (64 ft 10 in)
Length transported (jib tucked under)	13.28 m (43 ft 7 in)
Width axles ext / retracted	3.94 m (12 ft 11 in) / 2.49 m (8 ft 2 in)
Turntable rotation	360° continuous
Platform rotation	160°
Vertical jib rotation - up/down	70° / 55°
Hydraulic Jib	Extend™ jib
Turntable tailswing - axle retracted	1.14 m (3 ft 9 in)
Turntable tailswing - axle extended	1.70 m (5 ft 7 in)
Drive speed - stowed	4.3 km/h (2.7 mph)
Drive speed - out of stowed	0.65 km/h (0.4 mph)
Gradeability - stowed**	35%
Turning radius - axle retracted: inside outside	8.03 m (26 ft 4 in) 9.96 m (32 ft 8 in)
Turning radius - axle extended: inside outside	2.90 m (9 ft 6 in) 6.17 m (20 ft 3 in)
Controls	12 V DC proportional
Tyres	445D50/710HD
Translation/Direction	4x4x4
Power source	Deutz TD2.9 L4, 74 hp (55 kW), Stage IIIB, water cooled, Deutz TD2011L04i, 74 hp (55 kW), Stage IIIA, air cooled
Weight***	22.657 kg (49,950 lbs)
Standards Compliance EU Directives:	2006/42/EC – Machinery Directives

\* The metric equivalent of working height adds 2 m (6 ft) to platform height.

\*\* Gradeability applies to driving on slopes. See operator's manual for details regarding slope ratings.

\*\*\* Weight will vary depending on options and/or country standards.



Europe, MESART

Visit [www.genielift.com/en-gb/about-genie/locations](http://www.genielift.com/en-gb/about-genie/locations) to view our global locations list.

Europe T: +44 800 988 3739 (Toll Free for UK/Ireland), Fax +31 165 511 148, Email AWP-InfoEurope@terex.com

MESART T: +971 4 399 0381, Email AWP-InfoME@terex.com

[www.genielift.com/en-gb](http://www.genielift.com/en-gb)

## Worldwide Manufacturing And Distribution

Australia • Brazil • Caribbean • Central America • China • France • Germany • Italy • Japan • Korea • Mexico  
The Netherlands • Russia • Southeast Asia • Spain • Sweden • United Arab Emirates • United Kingdom • United States

Product specifications and prices are subject to change without notice or obligation. The photographs and/or drawings in this document are for illustrative purposes only. Refer to the appropriate Operator's Manual for instructions on the proper use of this equipment. Failure to follow the appropriate Operator's Manual when using our equipment or to otherwise act irresponsibly may result in serious injury or death. The only warranty applicable to our equipment is the standard written warranty applicable to the particular product and sale and we make no other warranty, express or implied. Products and services listed may be trademarks, service marks or trade names of Terex Corporation and/or their subsidiaries in the USA and many other countries. Genie and Taking You Higher are trademarks of Terex Corporation or its subsidiaries. © 2019 Terex Aerial Work Platforms.

GEN1840 Updated: 01/19

