



















ADD VALUE TO YOUR OFFER

GIVE YOUR CUSTOMERS THE CHOICE THEY NEED

S [®] -80 J		S [®] -85 XC [™]	
 660 LB 300 KG MAX PLATFORM CAPACITY 2 OCCUPANTS	How much capacity do you need?	 1,000/660 LB 454/300 KG MAX PLATFORM CAPACITY 3 OCCUPANTS	
 SIMPLE REACH ACCESS WHERE IT IS NEEDED AT THE TOP OF THE ENVELOPE	Need height, outreach or both?	 HEIGHT + OUTREACH BEST OUTREACH IN THE INDUSTRY	
 QUALITY SIMPLIFIED REDUCED COMPLEXITY, EASY TO OPERATE	Need easier or automised operation?	 DUAL ENVELOPE AUTOMATIC ENVELOPE CONTROL, ZERO LOAD CALIBRATION	
 TRAX OPTION YEAR-ROUND PRODUCTIVITY ON GRASS, SAND, MUD, SNOW	Need to work longer or faster?	 SAVE TIME LIFT MORE IN EACH CYCLE	
 1/3 LIGHTER* KEEP GROUND PRESSURE LOW FOR WORK ON SENSITIVE SURFACES	Is the weight important for your application?	 STANDARD WEIGHT FOR HIGH CAPACITY JOBS WHERE WEIGHT ISN'T A FACTOR	
FOR MOST JOBS AT HEIGHT  General Construction  Maintenance at Height  Urban Sites with Tight Spaces  Finishing Work with Power Tools		FOR JOBS REQUIRING EXTRA PERFORMANCE  Heavy Construction, Steel Work  Shipyard Sandblasting  Entertainment Ind., Glazing  Refineries with Extreme Needs	
		Applications Match the right-sized machine to each job and maximize your ROI	

* Compared to other machines in the same category class

Genie[®]

QUALITY^{BY} **DESIGN**
LEARN MORE AT [GENIELIFT.COM](https://www.genielift.com)



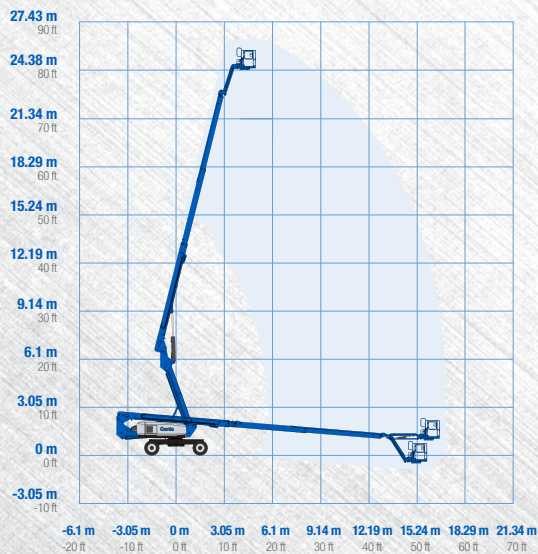
TraX Version

S[®]-80 J

MAX LIFT CAPACITY	660 lb 300 kg
WORKING HEIGHT MAX	86 ft 5 in 26.51 m
PLATFORM HEIGHT MAX	80 ft 5 in 24.51 m
HORIZONTAL REACH MAX	54 ft 9 in 16.69 m
GROUND PRESSURE - TIRES**	96 psi 664 kPa
GRADEABILITY	45%
WEIGHT - TIRES**	24,500 lb 11,113 kg
ENGINE OPTIONS (ANSI/CE) <ul style="list-style-type: none"> - 48 hp, Deutz D2011, Diesel, T4i/Stage IIIA - 49 hp, Kubota D1803, Turbo Diesel, T4f/Stage V 	

** For ground pressure and weight on the TraX version please see the genielift.com website
 *** Certification in process

FOR MOST OF THE JOBS AT HEIGHT

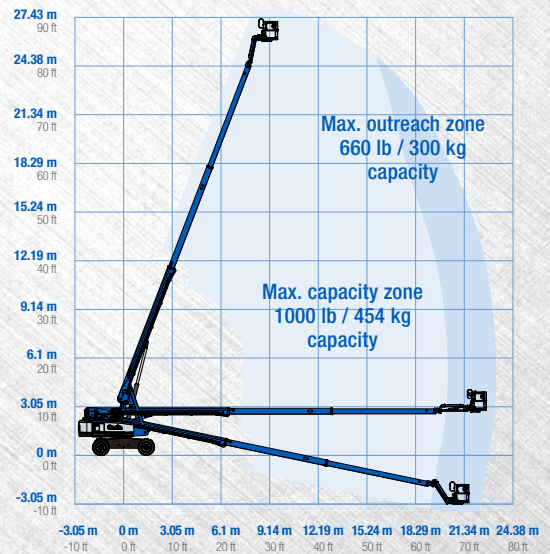


4 m / 13 ft ***

S[®]-85 XC[™]

MAX LIFT CAPACITY UNRESTRICTED	660 lb 300 kg
MAX LIFT CAPACITY RESTRICTED	1000 lb 454 kg
WORKING HEIGHT MAX	91 ft 27.91 m
PLATFORM HEIGHT MAX	85 ft 25.91 m
HORIZONTAL REACH MAX	74 ft 6 in 22.71 m
GROUND PRESSURE	130 psi 896 kPa
GRADEABILITY	45%
WEIGHT	39,500 lb 17,917 kg
ENGINE OPTIONS (ANSI) <ul style="list-style-type: none"> - 74 hp, 55 kW, Deutz TD2.9L, Turbo Diesel, T4f - 70 hp, 52 kW, GM Vortec 3.0L, Gas/LPG 	
ENGINE OPTIONS (CE) <ul style="list-style-type: none"> - 74 hp, 55 kW, Deutz TCD2.2L, Turbo Diesel, Stage V - 74 hp, 55 kW, Deutz TD2011, Turbo Diesel, T4i/Stage IIIA/CN III 	

FOR JOBS REQUIRING EXTRA PERFORMANCE



Genie[®]

QUALITY^{BY} DESIGN
 LEARN MORE AT GENIELIFT.COM