



















MAXIMIZE YOUR ROI

MATCH THE RIGHT BOOM FOR THE JOB

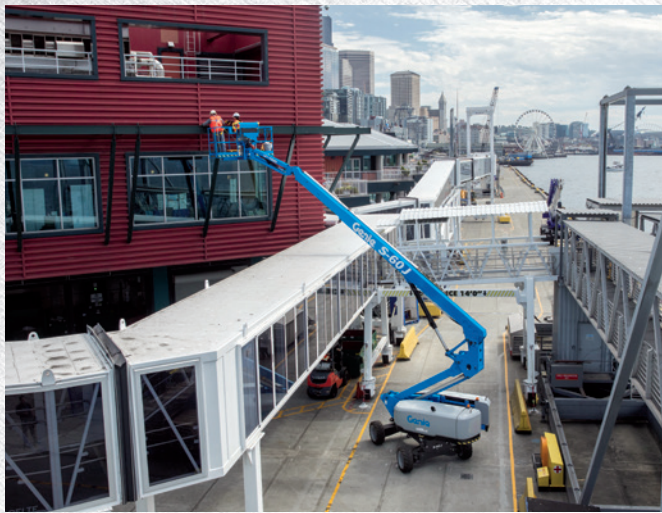
S [®] -60 J	⇓	S [®] -65 XC [™]
 660 LB 300 KG MAX PLATFORM CAPACITY 2 OCCUPANTS	How much capacity do you need?	1,000/660 LB 454/300 KG MAX PLATFORM CAPACITY 3 OCCUPANTS 
 QUICK REACH FAST UP-AND-DOWN SPEED FOR EVERYDAY WORK AT HEIGHT	Need height, outreach or both?	HEIGHT + OUTREACH BEST OUTREACH IN THE INDUSTRY 
 1 SINGLE ENVELOPE REDUCE COMPLEXITY, EASY TO OPERATE	Need easier operation or increased productivity?	SAVE TIME LIFT MORE IN EACH CYCLE 
 1 TRUCK - 2 UNITS* MAXIMIZE TRANSPORT	Need to optimize transport?	1 UNIT CAN FIT ON ONE TRUCK LOAD 
 1/3 LIGHTER** KEEP GROUND PRESSURE LOW FOR WORK ON SENSITIVE SURFACES	Is the weight important for your application?	STANDARD WEIGHT FOR HIGH CAPACITY JOBS WHERE WEIGHT ISN'T A FACTOR 
FOR MOST JOBS AT HEIGHT <div>  General Construction  Maintenance at Height </div> <div>  Urban Sites with Tight Spaces  Finishing Work with Power Tools </div>	Applications Match the right-sized machine to each job and maximize your ROI	FOR JOBS REQUIRING EXTRA PERFORMANCE <div>  Heavy Steel Work and Welding  Shipyard Sandblasting </div> <div>  Heavy Construction Glazing  Refineries with Extreme Needs </div>

* Select countries only

** Compared to other machines in the same category class

Genie

QUALITY BY DESIGN
LEARN MORE AT [GENIELIFT.COM](https://www.genielift.com)



S[®]-60 J

MAX LIFT CAPACITY	660 lb 300 kg
WORKING HEIGHT MAX	66 ft 10 in 20.5 m
PLATFORM HEIGHT MAX	60 ft 10 in 18.5 m
HORIZONTAL REACH MAX	40 ft 6 in 12.3 m
GROUND PRESSURE - TIRES	85 psi 585 kPa
GRADEABILITY	45%
WEIGHT	16,650 lb 7,550 kg
ENGINE OPTIONS (ANSI/CE) <ul style="list-style-type: none"> - 24.8 hp, Kubota D1105, Diesel, T4i/T4f, Stage IIIA/V, CN III - 49 hp, Kubota D1803, Turbo Diesel, T4f/Stage V 	

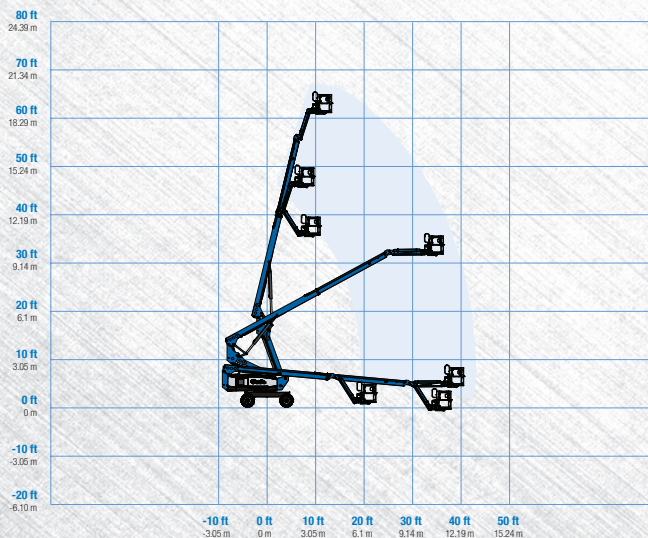


S[®]-65 XC[™]

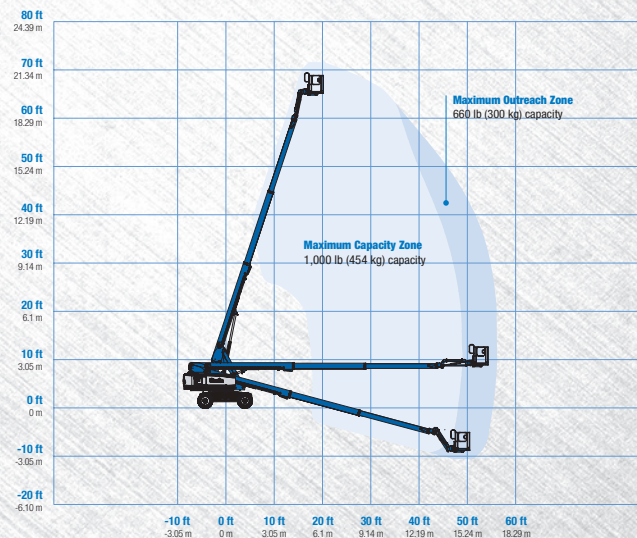
MAX LIFT CAPACITY UNRESTRICTED	660 lb 300 kg
MAX LIFT CAPACITY RESTRICTED	1000 lb 454 kg
WORKING HEIGHT MAX	71 ft 21.81 m
PLATFORM HEIGHT MAX	65 ft 19.81 m
HORIZONTAL REACH MAX	54 ft 2 in 16.51 m
GROUND PRESSURE - TIRES	90 psi 620 kPa
GRADEABILITY	45%
WEIGHT	25,160 lb 11,412 kg
ENGINE OPTIONS (ANSI/CE) <ul style="list-style-type: none"> - 49 hp, Deutz D2.9L, Diesel, T4f - 49 hp, Perkins 404F-E22T, Turbo Diesel, T4f - 60 hp, Ford 2.5L, Gas/LPG 	
ENGINE OPTIONS (CE) <ul style="list-style-type: none"> - 60 hp Deutz TD2.2L, Turbo Diesel, Stage V - 49 hp Deutz TD2.2L, Turbo Diesel, Stage V 	



FOR MOST OF THE JOBS AT HEIGHT



FOR JOBS REQUIRING EXTRA PERFORMANCE



Genie

QUALITY BY DESIGN
LEARN MORE AT GENIELIFT.COM