

nifty

150T

TRAILER MOUNTED ACCESS PLATFORM



14.70m (48ft 3in)
Working height

7.53m (24ft 8in)
Working outreach

Telescopic Upper Boom
Greater accuracy when
positioning platform

Bi-Energy
Optimising utilisation

Hydraulic Outriggers
For quick & easy setup

**Fully Proportional
Hydraulic Controls**
Simple, reliable & easy to maintain

Traction Drive Option
Improved manoeuvrability on site



niftylift.com



nifty 150T

Developed specifically to maximise outreach, the **Nifty 150T** delivers an unrivalled working envelope, especially at low levels where outreach is needed most. Compact dimensions coupled with hydraulically operated outriggers make manoeuvring and setting up the **150T** quick and simple, while its 1.4m wide platform provides the operator plenty of room in which to work. Fully proportional hydraulic controls make operating and maintaining the **150T** easy, minimising both downtime and running costs.

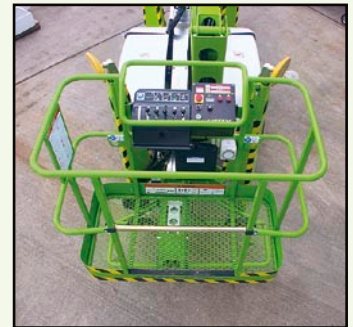
SAFETY FEATURES

- Cage Overload Sensing
- Outriggers with Audible and Visible Alarms
- Manual Recovery with Hand Pump
- Dual Controls (Platform & Base)
- Lock Valves on all Hydraulic Cylinders
- Overrun Brakes with Gas Spring Hand Brake
- Dual Harness Points
- CE Mark



The **150T** offers an up-and-over clearance of more than 5.6m allowing it to reach easily over larger obstacles such as walls and buildings.

Fully proportional controls and a spacious platform make the **150T** simple to operate with both speed and accuracy.

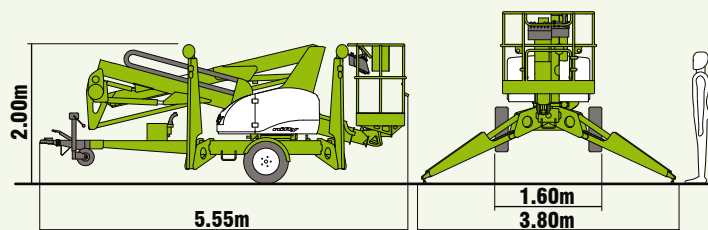
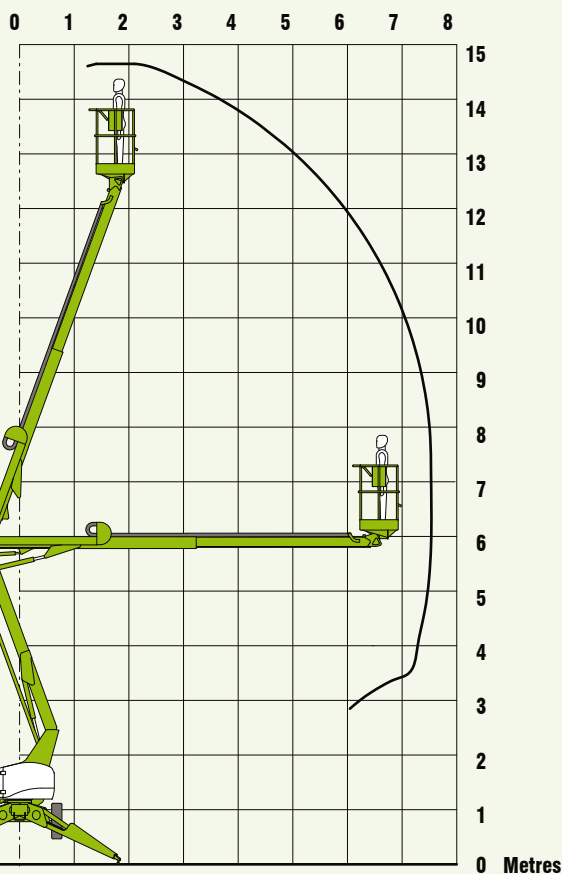


SPECIFICATIONS

Working Height	14.70m	48ft 3in
Platform Height	12.70m	41ft 8in
Working Outreach	7.53m	24ft 8in
Slew	400°	
Width - Travelling	1.60m	5ft 3in
- Working	3.80m	12ft 6in
Height	2.00m	6ft 7in
Length	5.55m	18ft 3in
Weight	1,725kg*	3,800lbs*
Platform Capacity	225kg	500lbs
Platform Size	1.40m x 0.70m	4ft 7in x 2ft 4in
Control System	Fully Proportional Hydraulic	
Power System	Bi-Energy (Engine & Battery/Mains) Mains Only Battery Only Petrol or Diesel Only**	
Drive Option	Traction Drive	

* Weights may vary according to specification / power options, please confirm before ordering.

** Options not currently available but will be in future, please check with Niftylift for release dates.



Due to a policy of continuing development and improvement, Niftylift reserves the right to change any specification without notice. Please confirm exact specification before ordering.

Supplied by:



T: 01332 856 359 F: 01332 810 769
E: info@workplatformltd.co.uk W: www.workplatformltd.co.uk

IS-03

Manufacturers of trailer mounted,
self propelled and vehicle mounted platforms.



NIFTYLIFT LTD
Fingle Drive
Stonebridge
Milton Keynes
MK13 0ER
England

www.niftylift.com
e-mail: info@niftylift.com
Tel.: +44 (0) 1908 223456
Fax.: +44 (0) 1908 312733