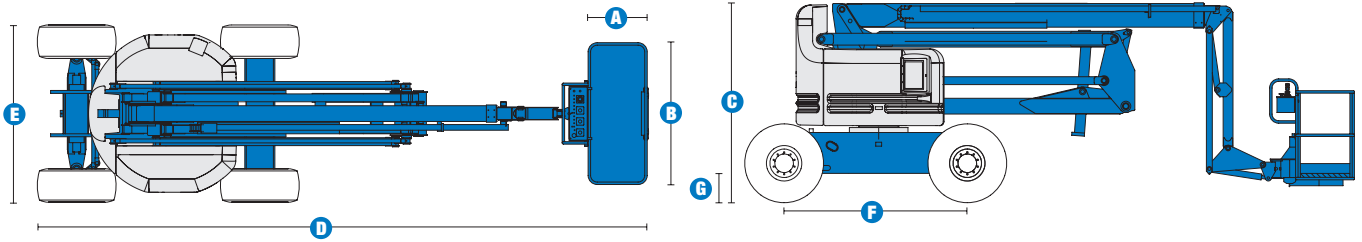
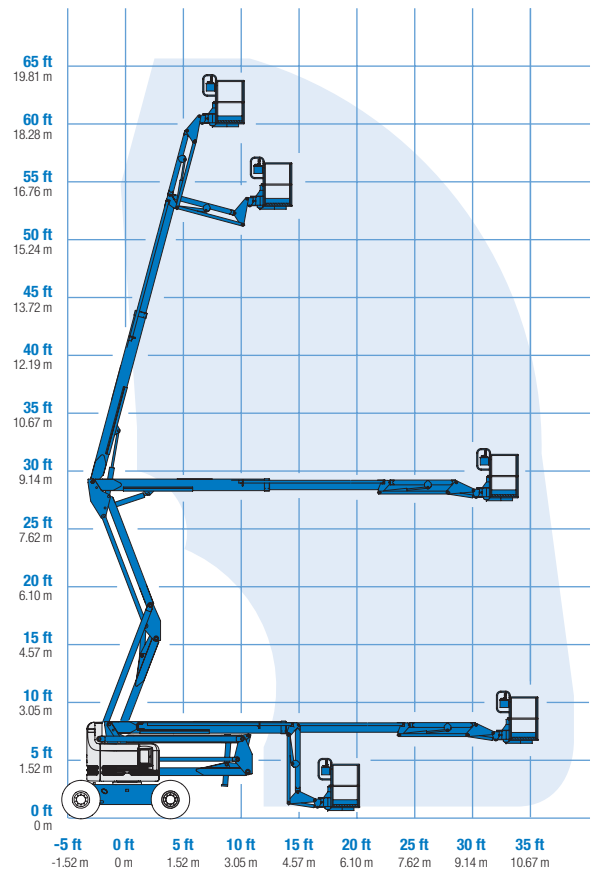


# Specifications



MODEL	Z™-60/34	
MEASUREMENTS	Metric	US
Working height maximum*	20.39 m	66 ft 4 in
Platform height maximum	18.39 m	60 ft 4 in
Horizontal reach maximum	11.05 m	36 ft 3 in
Up-and-over clearance maximum	8.23 m	27 ft
<b>A</b> Platform length - 6 ft / 8 ft model	76 cm / 91 cm	2 ft 6 in / 3 ft
<b>B</b> Platform width - 6 ft / 8 ft model	1.83 m / 2.44 m	6 ft / 8 ft
<b>C</b> Height - stowed	2.69 m	8 ft 10 in
<b>D</b> Length - stowed	8.15 m	26 ft 9 in
<b>E</b> Width	2.46 m	8 ft 1 in
<b>F</b> Wheelbase	2.51 m	8 ft 3 in
<b>G</b> Ground clearance - centre	41 cm	1 ft 4 in

## RANGE OF MOTION Z™-60/34



PRODUCTIVITY		
Lift capacity	227 kg	500 lbs
Platform rotation	180°	180°
Turntable rotation	360° continuous	
Turntable tailswing	zero	zero
Drive speed - lowered	4.8 km/h	3.0 mph
Drive speed - raised**	1.1 km/h	0.68 mph
Gradeability - 2WD***	25%	25%
Gradeability - 4WD***	40%	40%
Turning radius - inside	3 m	10 ft
Turning radius - outside	6.07 m	19 ft 11 in
Controls	12 V DC proportional	
Tyres	385/65 D19.5, 12 ply	

POWER		
Power source	Deutz D 2011 L03i cylinder diesel 48 hp (35.8 kW) Ford DSG-423 4 cylinder petrol/LPG 75 hp (56 kW) Perkins 404D-22 4 cylinder diesel 51 hp (38 kW)	
Auxiliary power unit	12 V DC	12 V DC
Hydraulic tank capacity	170.3 L	45 gal
Fuel tank capacity	75.7 L	20 gal

WEIGHT****		
	10,215 kg	22,520 lbs

**STANDARDS COMPLIANCE** CE EN280, PB-10-611-03

\* The metric equivalent of working height adds 2 m to platform height. U.S. adds 6 ft to platform height.  
 \*\* In lift mode (platform raised), the machine is designed to operate on firm, level surfaces only.  
 \*\*\* Gradeability applies to driving on slopes. See Operator's Manual for details regarding slope ratings.  
 \*\*\*\* Weight will vary depending on options and/or country standards.

## Features

### EASILY CONFIGURED TO MEET YOUR NEEDS

#### PLATFORM OPTIONS

- Steel 2.44 m (8 ft) (standard)
- Steel 1.83 m (6 ft)
- 2.44 m (8 ft) tri-entry

#### JIB

- Standard 1.83 m (6 ft) jib boom

#### POWER OPTIONS

- Deutz 48 hp (35.8 kW) diesel
- Ford petrol/LPG 75 hp (56 kW)
- Perkins diesel 51 hp (38 kW)

#### DRIVE OPTIONS

- 2 x 4
- 4 x 4

#### AXLE OPTIONS

- Oscillating (standard on 4WD)
- Non-oscillating

#### TYRE OPTIONS

- Rough terrain air-filled (standard)
- Rough terrain foam-filled

### STANDARD FEATURES

#### MEASUREMENTS

- 20.39 m (66 ft 4 in) working height
- 11.05 m (36 ft 3 in) horizontal reach
- 8.23 m (27 ft) up and over clearance
- Up to 227 kg (500 lb) lift capacity

#### PRODUCTIVITY

- Self-levelling platform
- Hydraulic platform rotation
- Fully proportional controls
- Drive enable
- AC power to platform
- Horn
- Hour meter
- Tilt alarm
- Descent alarm
- 360° continuous turntable rotation
- Locking turntable covers
- Zero tailswing
- Positive traction drive
- 2 speed wheel motors
- Certified load sensor

#### POWER

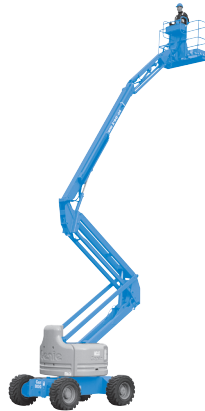
- All engines are emissions compliant
- 12 V DC auxiliary power
- Engine protection package

\*Available on select models

### STANDARD FEATURES cont.

#### POWER cont.

- Anti-restart engine protection
- Auto engine fault shutdown
- Deutz intake air heater



### OPTIONS & ACCESSORIES

#### PRODUCTIVITY

- Platform swing gate
- Half mesh platform inserts with swing gate
- Platform top auxiliary rail
- Hydraulic oil cooler
- Air line to platform
- Fire resistant hydraulic oil
- Biodegradable hydraulic oil
- Deluxe aircraft protection package
- Basic hostile environment kit
- Deluxe hostile environment kit
- Thumb rocker steer
- Tool tray
- Fluorescent tube caddy
- Pipe cradle (pair)
- Alarm package
- Panel cradle package\*
- Platform work lights
- Front driving lights
- Lockable platform control box covers
- Tow package

#### POWER

- Engine gauge package
- AC generator packages (110V/60Hz, 3000 W or 220V/50Hz, 2500 W)
- Cold weather packages
- Arctic packages
- Diesel scrubber/spark arrestor
- Diesel spark arrestor muffler
- LPG tank 15.19 kg (33.5 lb) capacity
- Additional LPG carrier with tank

Effective date: August, 2008. Product specifications are subject to change without notice or obligation. The photographs and/or drawings in this document are for illustrative purposes only. Refer to the appropriate Operator's Manual for instructions on the proper use of this equipment. Failure to follow the appropriate Operator's Manual when using our equipment or to otherwise act irresponsibly may result in serious injury or death. The only warranty applicable to our equipment is the standard written warranty applicable to the particular product and sale and we make no other warranty, expressed or implied. Products and services listed may be trademarks, service marks or trade-names of Terex Corporation, Genie Industries, Inc. and/or their subsidiaries in the U.S.A. and many other countries and all rights are reserved. Terex is a Registered Trademark of Terex Corporation in the U.S.A. and many other countries. Genie is a Registered Trademark of Genie Industries, Inc in the U.S.A. and many other countries. Genie is a Terex Company. Copyright 2008 Terex Corporation



**T: 01332 856 359**

**E: info@workplatformtd.co.uk**

**www.workplatformtd.co.uk**  
sales • leasing • hire • training • support